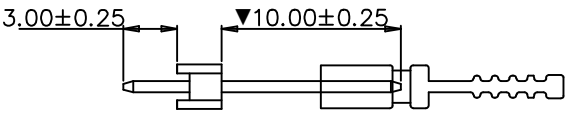
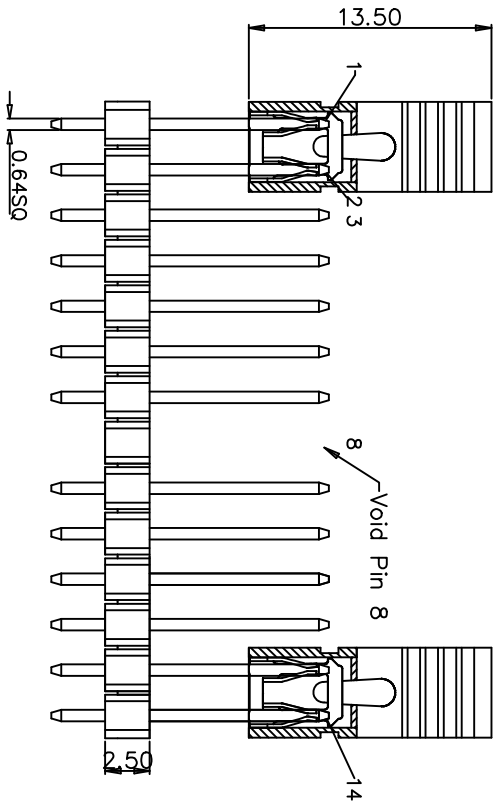


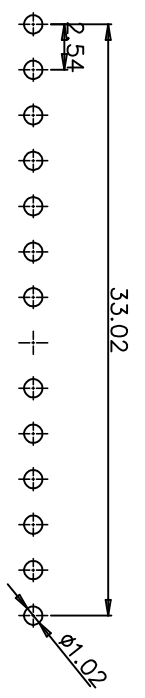
CUSTOMER COPY



REVISION DATA				
SYM	ECN	DESCRIPTION	DATE	APPROVED
B		Add Jumper	2019/06/05	ZW

Technical Data
 Contact:
 Contact plating:
 Insulator:

brass JIS C2700(H65)
 see ordering information
 black glass filled polyester
 UL94V-0
 3Amps
 Current rating:
 Contact resistance:
 Insulation resistance:
 Withstanding Voltage:
 Retention force:
 Operating temperature:
 Soldering temperature:
 Critical Dimensions:▼



Recommended P.C.B
 Layout(±0.05)

Ordering information
QHA1 **25** **1** **-P** **14** **X** **X** **A** **291** **-2**

High Option 25: H=2.50mm	No. of Positions 01~40	Plating Option A: Au B: AuSp. C: AuSp. D: AuTiP. H: GFSn120μ. Z: Special (Underline option is standard)	Insulator Material Option A: BK-FBT F: BK-LCP G: BK-PA9T S: Special (Underline option is standard)	Type Option A: Normal C: With CAP	Serial No. 01-999
-----------------------------	---------------------------	---	--	---	----------------------

Packing	
1. General	√
2. Tape&Reel	
3. Tube	
4. Tray	
5. Other	X

TOLERANCE:	
ANGLE	±2°
1. General	±0.05
2. Tape&Reel	±0.25
3. Tube	±0.35
4. Tray	±0.50
5. Other	

natconn 广东纳特康电子股份有限公司
 GUANGDONG NATCONN ELECTRONIC CO.,LTD

PROJECTION	
DATE	2019/06/05
DRAWN	张伟
CHECKED	唐建平
APPROVED	冯显东

TITLE:	
Pitch:2.54*H2.54mm Pin Header Single Row Straight Type	
CUSTOMER:	N/A
PART NO.:	QHA1251P14A291-2
SIZE:	A4
UNIT:	mm
SCALE:	1:1
SHEET:	1/1

6 5 4 3 2 1