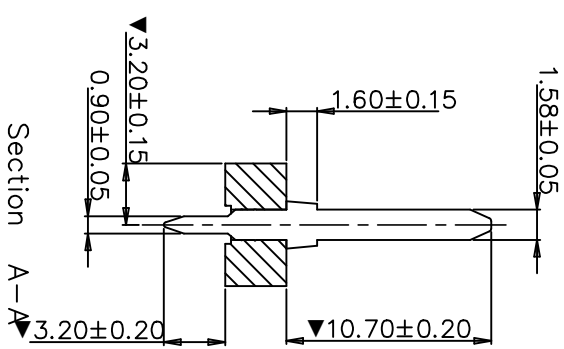
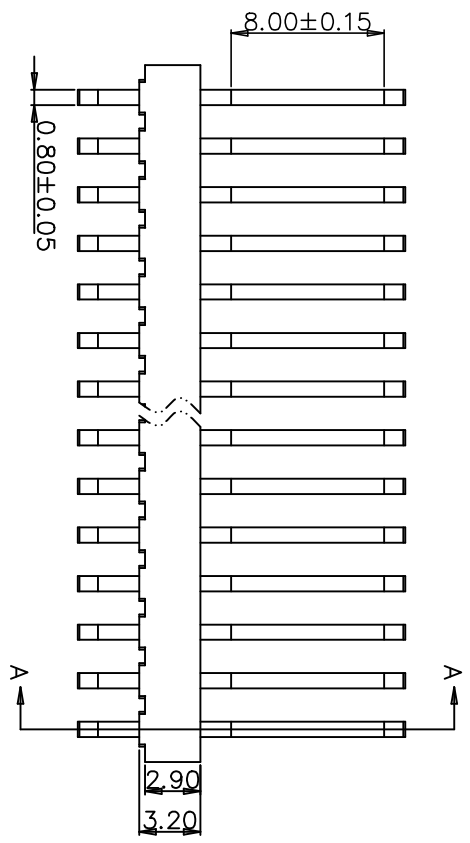
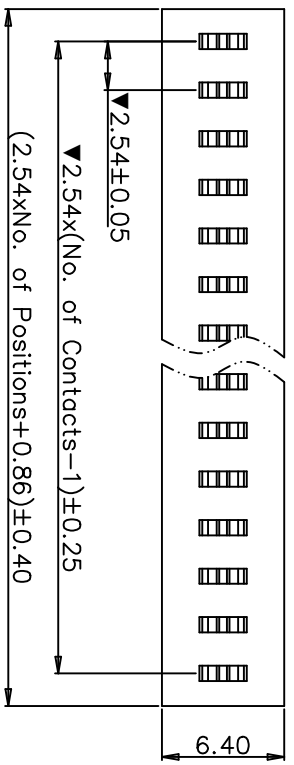




REVISION DATA				
SYM	ECN	DESCRIPTION	DATE	APPROVED

Technical Data  
 Contact: brass JIS C2800EH  
 Contact plating: 25~30u" gold plated on mating area and 120~200u" tin plated on soldering area, all over 50~80u" nickel plated

Insulator: PBT+30%G.F, UL94V-0  
 Current rating: 7.5Amps  
 Contact resistance: 20mΩ max.  
 Insulation resistance: 5000MΩ min. at 1000V  
 Withstanding Voltage: 1500V AC/minute  
 Retention force: 1.0Kgf/contact min.  
 Operating temperature: -55°C to +105°C  
 Soldering temperature: 245°C±5 5S  
 Critical Dimensions: ▼



Ordering information  
**QHA1** **32** **1** **-P** **XX** **Q** **A** **A** **01**

High Option  
32: H=3.2mm

No. of Positions  
01-30

Type Option  
A Normal

Serial No.  
01-99

Packing	TOLERANCE:
1. General	ANGLE ±2°
2. Tape&Reel	X.XXX ±0.05
3. Tube	X.XX ±0.20
4. Tray	X.X ±0.30
5. Other	X. ±0.50

**natconn** 东莞市纳特康电子有限公司  
 DONGGUAN NATCONN ELECTRONIC CO.,LTD

PROJECTION	TITLE:	CUSTOMER:	CUSTOMER P/N:	REV:
DATE: 2014/07/01	Pinch: 5.4*H3.2mm Pin Header Single Row Straight Type	客户: N/A	N/A	N/A
DRAWN: 邹丽婷		PART NO.: QHA1321PA01	DRAWING NO.: QHA1321PA01	REV: A
CHECKED: 于松		SIZE: A4	UNIT: mm	SCALE: 2:1
APPROVED: 张丰志				SHEET: 1/1