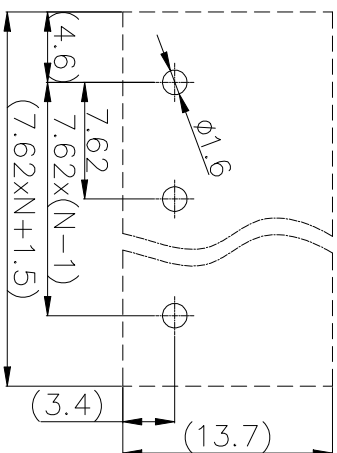
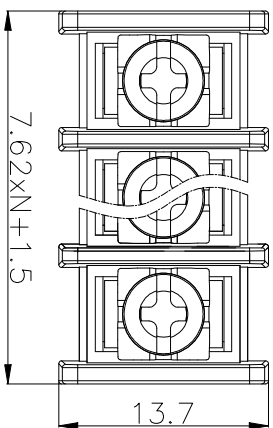


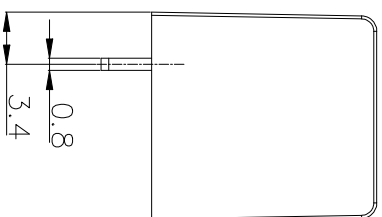
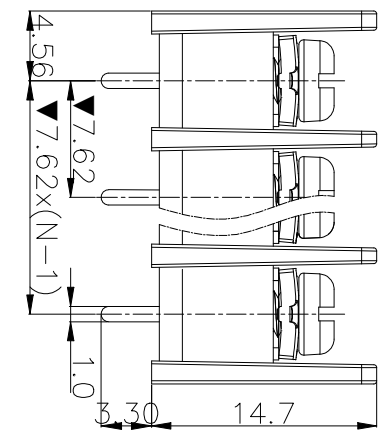


| REVISION DATA | | | | |
|---------------|-----|-------------|------|----------|
| SYM | ECN | DESCRIPTION | DATE | APPROVED |
| | | | | |
| | | | | |



Recommended P.C.B Layout

- Technical Data
- Material: Insulator: PBT, UL94V-0 RoHS
Screw & gasket: steel M3, see ordering information
Terminal: brass (CuZn), see ordering information
 - Electrical: Current rating: 15A
Voltage rating: 250V
Contact resistance: $\leq 20\text{m}\Omega$
Insulation resistance: $\geq 5000\text{M}\Omega$
Withstanding Voltage: 2000V AC/minute
 - Mechanical: Wire range: 22~14AWG
Screw torque: 5.3lb-in
Operating temperature: -40°C to +105°C
Soldering temperature: 245°C \pm 10°C/5S
 - Critical Dimensions: \blacktriangledown



Ordering information

| | | | | | | | |
|------------|----------|----------|--------------------|----------------|-------------------------|----------|------------|
| BBD | B | 2 | XX | 0 | X | X | 01 |
| | Pitch | Dip Type | Number of contacts | Cover & Flange | Screw & Contact plating | Mark | Serial No. |

| | | | | | | |
|-------------|-------------------------------|-------|--------------------------|--|---|---|
| B 7.62/.30" | 2 Eccentric without back hole | 02~12 | 0 W/o flange & W/o cover | 0 Screw & Contacts 1. Screw plating Ni & Screw plating G/F & Contact plating Sn 2. Screw plating G/F & Contact plating Sn 3. Contact plating Sn (underline is standard) | 0 No mark 1 not copper 2 Customer 3 Others | 00 Standard 01~99 Add special item by customer request |
| | | | | | | |

natconn® 广东纳特康电子股份有限公司
GUANGDONG NATCONN ELECTRONIC CO.,LTD

| | | | | | |
|--------------------------------|------------------|--------|--------------------|--------------------------|------------|
| TOLERANCE: ANGLE $\pm 2^\circ$ | PROJECTION | TITLE: | BBD Terminal Block | | |
| X.XXX ± 0.05 | DATE: 2019/09/20 | | CUSTOMER: 莫健勇 | CUSTOMER P/N: N/A | REV: N/A |
| X.XX ± 0.25 | DRAWN | | PART NO.: | DRAWING NO.: BBD2XX00X01 | REV: A |
| X.X ± 0.35 | CHECKED | | SIZE: A4 | UNIT: mm | SCALE: 1:1 |
| X. ± 0.50 | APPROVED | | | | SHEET: 1/1 |