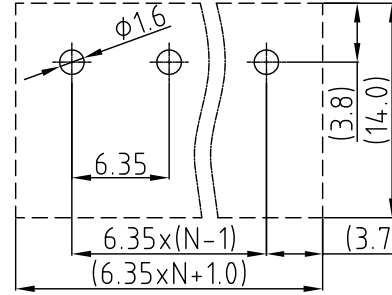
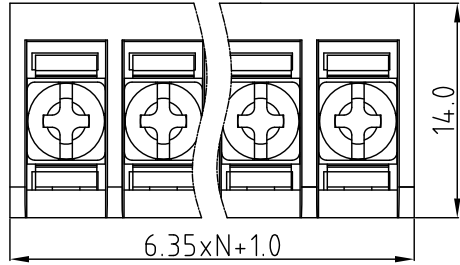


CUSTOMER COPY



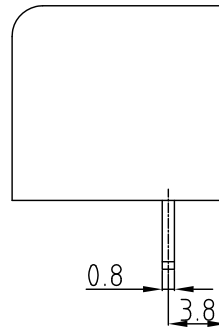
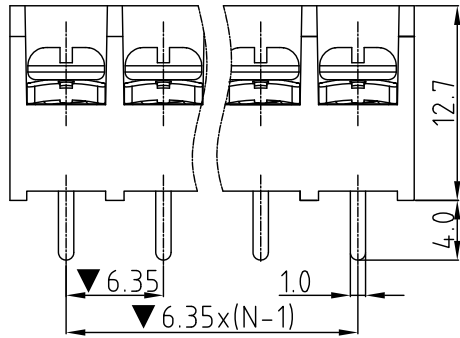
REVISION DATA				
SYM	ECN	DESCRIPTION	DATE	APPROVED



Remmended P.C.B Layout

Technical Data

- Material:
  - Insulator:PBT,UL94V-0 RoHS
  - Screw & gasket:steel M3,see ordering information
  - Terminal:brass(CuZn),see ordering information
- Electrical:
  - Current rating:10A
  - Voltage rating:250V
  - Contact resistance: $\leq 20m\Omega$
  - Insulation resistance: $\geq 5000M\Omega$
  - Withstanding Voltage:2000V AC/minute
- Mechanical:
  - Wire range:22~18AWG
  - Screw torque:5.3Lb-in
  - Operating temperature:-40°C to+105°C
  - Soldering temperature: 245°C±10°C/5S
- Critical Dimensions:▼



Ordering information

<b>BAB</b>	<b>8</b>	<b>5</b>	<b>XX</b>	<b>0</b>	<b>X</b>	<b>X</b>	<b>00</b>
Pitch	Dip type	Number of contacts	Cover & Flange	Screw & Contact plating	Mark	Serial No.	
8 6.35/.25"	5 Eccentric with back wall	02~12	0 W/o flange & W/o cover	0 Screw & Contacts plating G/F 1 Screw plating Ni & contacts plating G/F 2 Screw plating G/F & contact plating Sn 3 <u>Screw plating Ni &amp; contacts plating Sn</u> (Underline is standard)	0 No mark 1 natconn 2 Customer 3 Others	00 Standard 01~99 Any special item by customer request	

**natconn**® 广东纳特康电子股份有限公司  
GUANGDONG NATCONN ELECTRONIC CO.,LTD

TOLERANCE:	PROJECTION		TITLE: BAB Terminal Block		
ANGLE ±2°	DATE	2011/11/05			
X.XXX ±0.01	DRAWN	Sullen	CUSTOMER: N/A	CUSTOMER P/N: N/A	REV: N/A
X.XX ±0.25	CHECKED	唐建平	PART NO.:	DRAWING NO.: BAB85XX0XX00	REV: A
X.X ±0.35	APPROVED	冯显东	SIZE: A4	UNIT: mm	SCALE: 1:1
X. ±0.50					SHEET: 1/1